



**SOUTHWESTERN**  
TRAVEL GROUP

# **MEETING & EVENTS** **VENUES**

# MEETING VENUES

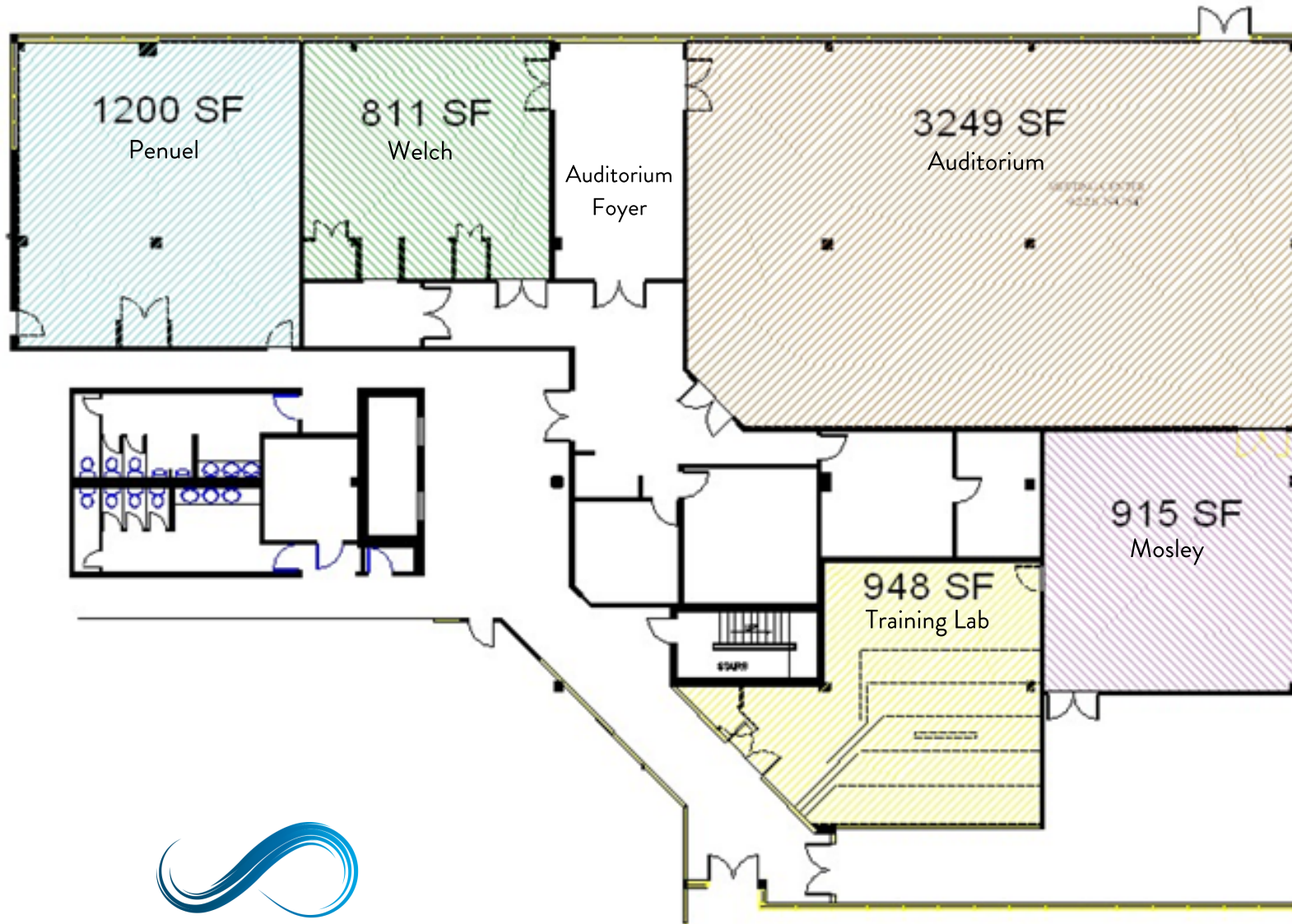
The recently renovated Southwestern meeting space features more than 7,000 square feet of versatile meeting space, complete with an auditorium and up to 4 breakout rooms with various conference rooms available. All meeting space is easily accessible on the first floor of Building 1 except for smaller boardrooms. This space is great for general sessions, exhibits, and receptions, among other events.



Auditorium:	3,249 sq. feet
Penuel:	1,200 sq. feet
Mosley:	915 sq. feet
Welch:	811 sq. feet
Training Lab:	948 sq. feet



# DIAGRAM

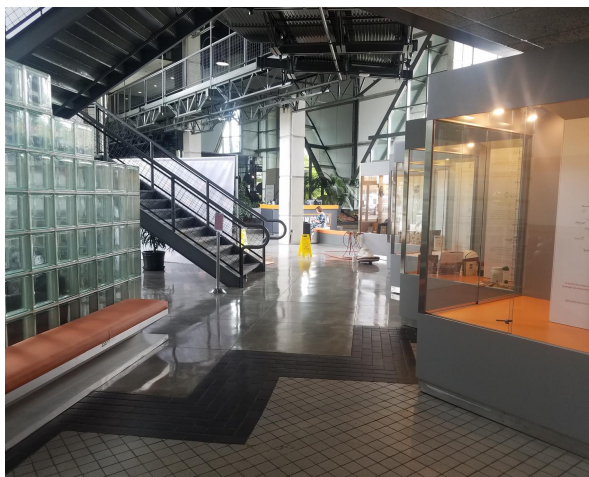


**SOUTHWESTERN**  
TRAVEL GROUP

# SPACE SPECS

Space	Floor	Building	Sq Ft.	Dimensions (Ft.)	Theatre Set	Classroom (2 per 5' table)	Conference	Banquet (8 per table)	Banquet (10 per table)
<b>Meeting Rooms</b>									
Auditorium	1st	2	3249	72 x 45	360	192	N/A	200	250
Auditorium Lobby	1st	2	750	50 x 15	N/A	N/A	N/A	N/A	N/A
Welch	1st	2	811	30 x 24	77	46	N/A	48	60
Penuel	1st	2	1200	33 x 36	150	72	N/A	72	90
Training Lab	1st	2	948	N/A	N/A	34	N/A	N/A	N/A
Mosely	1st	2	915	30.5 x 30	105	60	N/A	72	90
<b>Atrium</b>									
Atrium	1st	Atrium	N/A	N/A	N/A	N/A	N/A	N/A	140
<b>Boardrooms</b>									
Carl Roberts Boardroom	3rd	1	400	16 x 25	N/A	N/A	10	N/A	N/A
Hays Boardroom	3rd	1	513	27 x 19	N/A	N/A	12	N/A	N/A
SW Fundraising Boardroom	2nd	1	300	20 x 15	N/A	N/A	10	N/A	N/A
Henderson Boardroom	3rd	1	255	17 x 15	N/A	N/A	8	N/A	N/A
Heffel Boardroom	2nd	2	405	27 x 15	N/A	N/A	10	N/A	N/A
Leadership Conference room	3rd	1	153	12 x 13	N/A	N/A	4	N/A	N/A

*Dimensions are estimates only and may not be exact measurements. Square footage is approximate and figures are for maximum room sets. Floor plans are subject to change.*



# AUDIO VISUAL

## Auditorium

- Build-in 28' x 8' stage
- 2 built in 6000 lumen Laser projectors & 2 screens
- 2- 55" monitors
- 55" Confidence monitor for presenters
- HDMI input for laptops
- Blue-ray player
- Wireless handheld microphone built in
- Wireless lavalier microphone built in
- Lectern microphone
- 4 microphone/line inputs on stage
- Crestron Touch Panel for complete lighting & audio control on stage or in back of the room.
- 18 – 8" ceiling mounted Speakers
- LED Audience and stage lighting



## Training Lab

- 2 - 75" monitors on front wall for presentations
- HDMI input
- Wireless lavalier mic
- Sound system
- Crestron Touch Panel to control audio
- LED Lights or Can Lights

## Mosley

- 2 wall mounted 80" monitors
- Microphone
- Speakers
- Equipment for video conferencing through Zoom Meetings

\*Should you require additional AV, please inquire for a quote.

